

**DESCRIPTION:**  
**WALL BRACE**  
**WINDOW TRIM**  
**POST-WALL CONNECTION**

DATE: 10/5/04

DRAWN: BLG

SCALE: 1:5

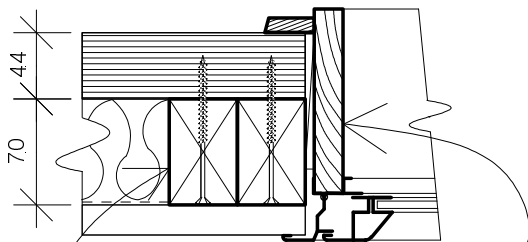
SHEET:

**3**

90 x 90mm POST FIXED WITH 75mm 10 GAUGE ZINC PLATED SCREWS @ 180mm CRS (1 PER BOARD). STOP ON TOP OF PARTICLE BOARD FLOORING & SCREW FIX THROUGH 100 x 50 TOP PLATE AS PER ENGINEERS SPECIFICATION CLAUSE 12 & 13.

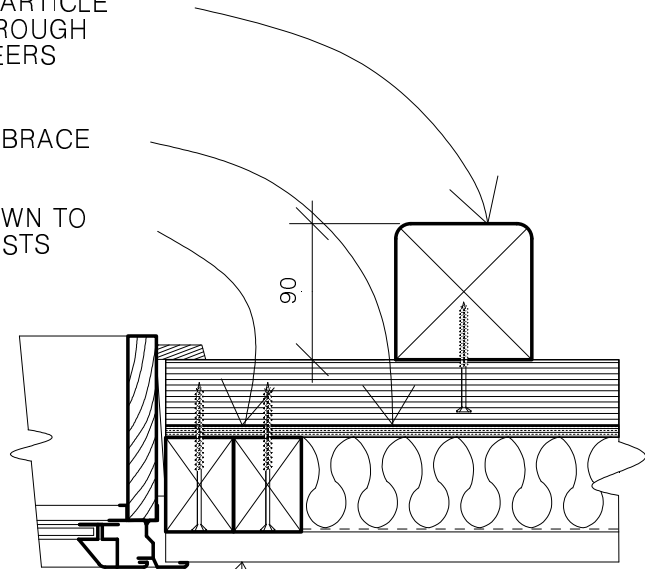
7.5mm CONSTRUCTION PLY SHEET BRACE FIXED AS PER SHEET: 20

EX 75 x 50mm BATTENS RIPPED DOWN TO 62mm WHEREVER A PLY BRACE EXISTS AND FIXED IN THE USUAL MANNER



TYPICAL JAMB DETAIL  
 EXTERIOR CLADDING ON  
 APPROVED BUILDING WRAP

EX 75 x 50mm DOUBLE BATTENS EACH SIDE OF FULL HEIGHT GREATER THAN 2.7m WIDE WINDOWS FIXED IN THE USUAL MANNER (1 SCREW/BOARD). ALL OTHER OPENINGS REQUIRE ONLY 1 BATTEN EITHER SIDE



© Frontier Solid Wood Homes Ltd 2003

**NOTES:**

**DESCRIPTION:**

EXTERIOR CORNER  
EXTERIOR-INTERIOR WALL

DATE: 10/5/04

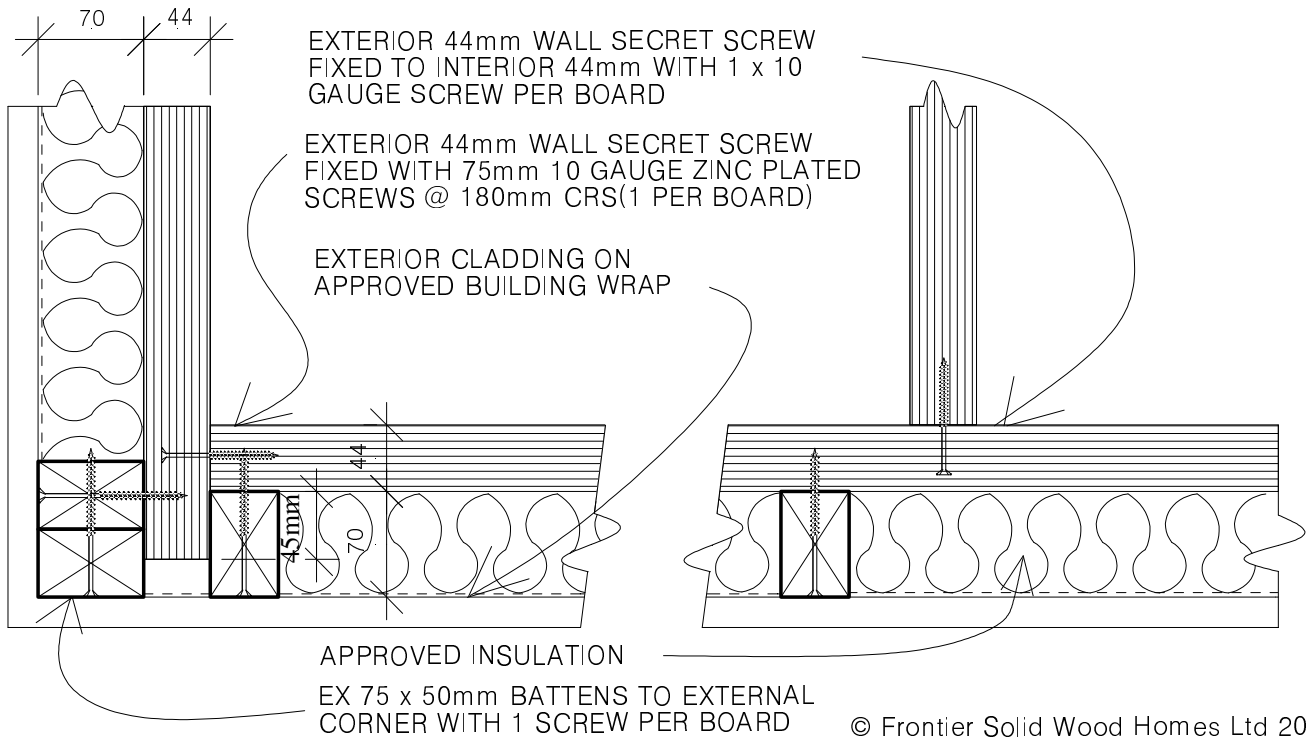
DRAWN: BLG

SCALE: 1:5

SHEET:

4

**NOTE- ANY DEFECTS TO BOARDS ARE TO BE POSITIONED SUCH THAT THE WORSE SIDE OF THE BOARD IS NOT SEEN, i.e. OUTSIDE FACE OF EXTERIOR WALLS, INSIDE OF WARDROBES OR BEHIND PANTRY**



**NOTES:**